

Weigh Safe!

MEASURES TONGUE WEIGHT

Towing ***Peace of Mind***™



2018 Product Catalog



www.weigh-safe.com

A Company Built in the U.S.A.

Weigh-Safe is a Lindon Utah based company focused on delivering the safest and highest quality products in the towing industry. The Weigh Safe Team is committed to providing state-of-the-art towing equipment to ensure "Towing Peace of Mind" for both families and businesses across the globe. With a future full of innovation, we are prepared to change the way people tow.

The Man Behind the Hitches

Kevin McAllister

Kevin McAllister gained national attention when he won the 2014 Best New Product of Tools and Equipment at the SEMA Show in Las Vegas for his tongue weighing trailer hitch, Weigh Safe. However, McAllister was making a difference long before he thought of the innovative Weigh Safe Towing System.

Through the years McAllister has accumulated 14 individual U.S. patents for an array of novel innovations. These patents span the breadth of the automotive industry, yet share a single goal: safety. The Weigh Safe Adjustable Ball Mount is the pinnacle of McAllister's professional achievements as it quickly grows to be one of the most popular towing accessories in the United States. It took over a decade of research and development to perfect the design, "Towing Peace of Mind."

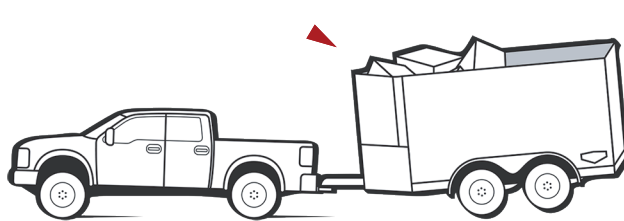


Today the Weigh Safe Team is hard at work, continually developing new innovations to ensure that our products are among the safest and among the highest quality in the towing industry. The 180 Hitch, the Universal Tow Ball and the Bluetooth compatible Weigh Safe are just a few of the many new innovations that Weigh Safe plans on releasing in the upcoming months.

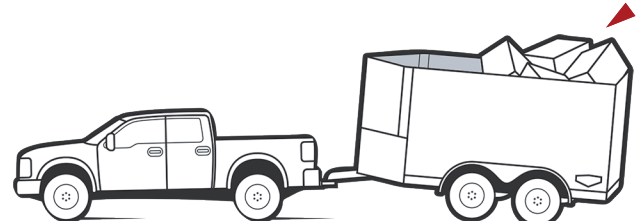
Since the unveiling of the Weigh Safe Towing System we have expanded into all 50 states and our international presence is quickly growing. With our expansion into Canada, and a marketing campaign poised to expand the European and Australian markets, Weigh Safe is soon to be a dominant force in the towing industry.

How Tongue Weight Affects Your Vehicle

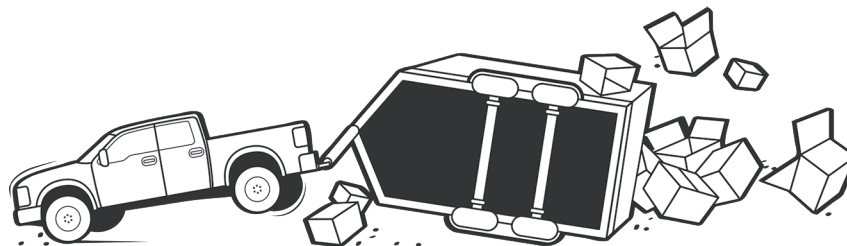
The tongue weight is the static force the trailer tongue exerts on the hitch/tow ball. Proper trailer tongue weight improves the vehicle and trailer towing experience by improving performance. Not enough tongue weight or force on the hitch/tow ball causes an increase in trailer sway from side to side, making it difficult to control. Conversely, too much tongue weight or force on the hitch/tow ball could overload the rear tires of the towing vehicle, pushing the rear end of the vehicle around. This could also negatively affect the vehicle handling. Performance is impaired as you might not be able to go around corners and curves properly, and your vehicle may not stop quickly enough when you press the brake pedal.



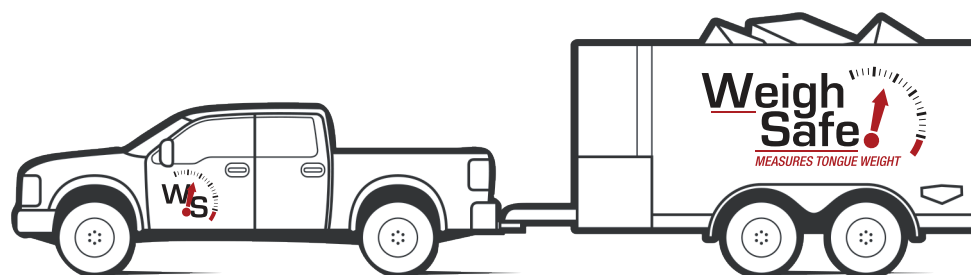
Too Much tongue weight



Too Little tongue weight



Too Late and your life is at stake



Towing **Peace of Mind**TM with Weigh Safe Drop Hitch

The Weigh Safe Drop Hitch

The only ball mount that measures tongue weight.

Tongue Weight Scale

Every Weigh Safe ball mount has a built in hydraulic scale engineered to measure tongue weight. This scale is designed to be accurate to within a 50 pound range and carries with it our Weigh Safe guarantee. This scale will allow you to easily and quickly ensure that your tongue weight stays within 10-15% of your gross trailer weight reducing liability while maximizing efficiency.

Highest Quality

With components made of 6061 T6 Aircraft Grade Aluminum and 303 Stainless Steel, you won't find a better engineered ball mount on the market. We strive to exceed the industry standard of quality and provide enough options to satisfy every need.

Towing Peace of Mind

The idea behind Weigh Safe is the simple motto, "Towing Peace of Mind." Our goal is to ensure the safety of our customers, their families, and the many businesses whom we serve nationwide. We understand the importance of the load that you haul, whether on your trailer or in the cabin of your vehicle so we create the highest quality products to ensure YOUR "Towing Peace of Mind."

Easy Adjustment

The many features offered include: drop height ranging from 4"-10", functionality in both the drop and rise position, and of course the dual pin system to protect your investment. We have designed this product not only to be beautiful, but to quickly and effectively meet your every need.



Available in 4 Different Drop Lengths
2" & 2-5/16" Stainless Steel Balls Included



2" Shank
Max GTW
10,000 lbs



2.5" Shank
Max GTW
14,500 lbs



3" Shank
Max GTW
21,000 lbs

FEATURES	4", 6", 8", 10" Drop Hitches
Shaft	2", 2.5", and 3"
Ball	2" & 2-5/16" Stainless Steel balls included *1-7/8" add-on option
Hitch Material	6061-T6 Aluminum and 303 Stainless Steel
Rise	All hitches may be used in rise position *Gain 1 inch (e.g. 4" drops are 5" rises)
Total Height	Add 3 inches * e.g. 4" drops measure 7 inches from the top of the receiver to the hitch base
Max GTW	7,500 lbs - 1-7/8" ball 8,000 lbs - 2" ball 10,000 lbs - 2-5/16" ball (2" shaft) 14,500 lbs - 2-5/16" ball (2.5" shaft) 21,000 lbs - 2-5/16" ball (3" shaft)
Max Tongue	1,500 lbs (2" shank) 2,200 lbs (2.5" & 3" shanks)
V5 & J684 certified	✓
Drop Hitch Adjustment	1" increments
Weight	4" drop - 16 lbs 6" drop - 18lbs 8" drop - 19 lbs 10" drop - 20 lbs
Stow	Pull off slider and turn backward Not available on 3" shank
Pin	Double (locks in)
Dust Lock Cover	✓

The 180° Drop Hitch

Quick Exchange

The 180 Hitch is the definition of adaptability and ease. With an array of hitch ball sizes ranging from 1-7/8" to 2-5/16", you can switch between trailers in moments. The aluminum components have been engineered to allow a clean rotation of the slider to minimize down time while maximizing tow time.

Long Lasting

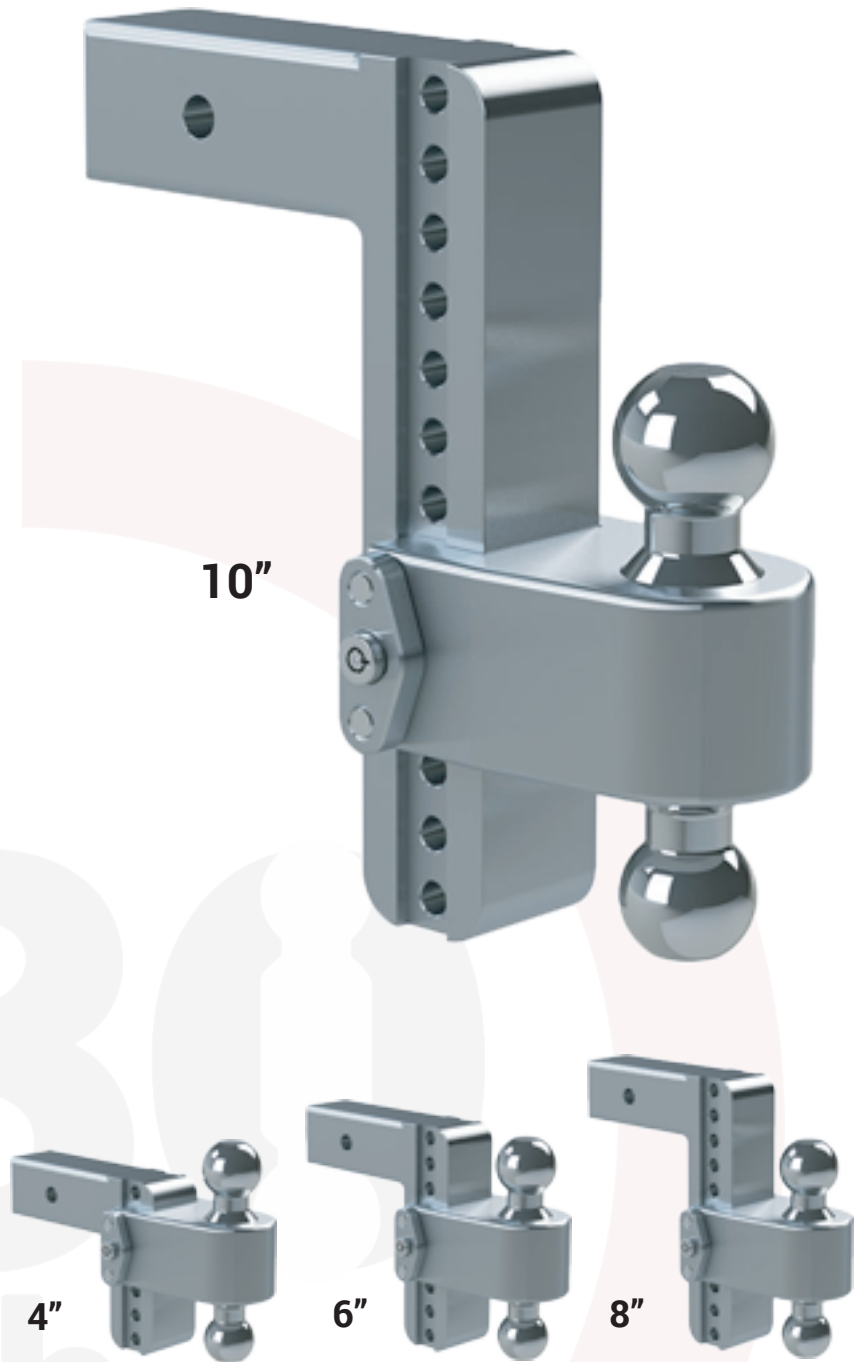
When you buy a Weigh Safe product you can expect it to outlast your truck. With the highest quality materials and expert engineering this product will not only get the job done but look good while doing it. Milled stainless steel hitch balls and aircraft grade aluminum will ensure that professional look, week after week and job after job.

Easy Adjustment

The many features offered include: drop height ranging from 4"-10", functionality in both the drop and rise position, and of course the dual pin system to protect your investment. We have designed this product not only to be beautiful, but to quickly and effectively meet your every need.

Highest Quality

With components made of 6061 T6 Aircraft Grade Aluminum and 303 Stainless Steel, you won't find a better engineered ball mount on the market. We strive to exceed the industry standard of quality and provide enough options to satisfy every need.



Available in 4 Different Drop Lengths



2" Shank
Max GTW
10,000 lbs



2.5" Shank
Max GTW
14,500 lbs



3" Shank
Max GTW
21,000 lbs

FEATURES	4", 6", 8", 10" Drop Hitches
Shaft	2", 2.5", and 3"
Ball	2" & 2-5/16" Stainless Steel Combo ball included *1-7/8" x 2" combo ball add-on option
Hitch Material	6061-T6 Aluminum and 303 Stainless Steel
Rise	All hitches may be used in rise position *Gain 1 inch (e.g. 4" drops are 5" rises)
Total Height	Add 3 inches * e.g. 4" drops measure 7 inches from the top of the receiver to the hitch base
Max GTW	7,500 lbs - 1-7/8" ball 8,000 lbs - 2" ball 10,000 lbs - 2-5/16" ball (2" shaft) 14,500 lbs - 2-5/16" ball (2.5" shaft) 21,000 lbs - 2-5/16" ball (3" shaft)
Max Tongue	1,500 lbs (2" shank) 2,200 lbs (2.5" & 3" shanks)
V5 & J684 certified	✓
Drop Hitch Adjustment	1" increments
Weight	4" drop - 16 lbs 6" drop - 18lbs 8" drop - 19 lbs 10" drop - 20 lbs
Double Lock Pin	Key lock included
Dust Lock Cover	✓



Towing **Peace of Mind**™

The Universal Tow Ball

Tongue Weight Scale

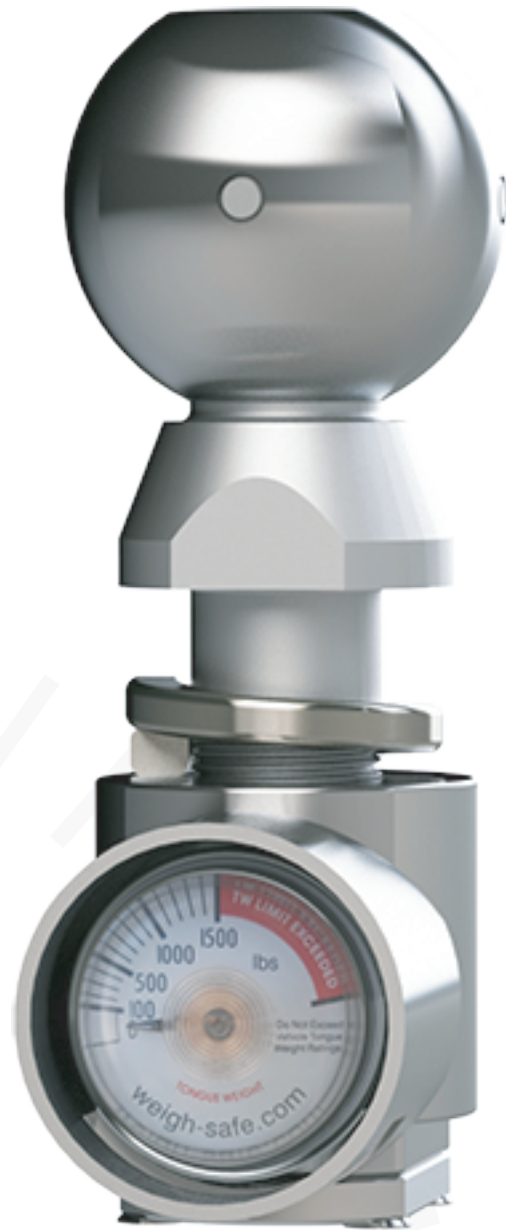
Every Universal Tow Ball is equipped with a hydraulic gauge that measures trailer tongue weight. The Universal Tow Ball is engineered to work with a 3/4" fixed height mount. This tow ball will allow the vehicle operator to receive instantaneous feedback on the positioning of their trailer load making it simple to maintain the recommended 10-15% GTW on the tongue of the trailer.

Highest Quality Construction

The primary components of the Universal Tow Ball are made of 303 Stainless Steel and guaranteed not only to look amazing but endure the rigors of the towing industry. A key feature is the central rod constructed of 306 Stainless Steel providing both long-lasting and accurate measurements. The Universal Tow Ball comes with a stainless steel Clam Shell allowing quick ball-size changing.

Towing Peace of Mind

The idea behind Weigh Safe is the simple motto, "Towing Peace of Mind." Our goal is to ensure the safety of our customers, their families, and the many businesses whom we serve nationwide. We understand the importance of the load that you haul, whether on your trailer or in the cabin of your vehicle so we create the highest quality products to ensure YOUR "Towing Peace of Mind."



Max GTW **10,000 lbs.**

Our Clam Shell adapter allows you to change your 2" tow ball to a 2 5/16" tow ball.



Weigh Safe Accessories



A. Key Lock Dust Cover (WS08)

The dust cover is constructed from durable rubber, designed to grip the aluminum surface of the Key Lock Assembly. The dust cover will prevent all types of road hazards (dust, debris, Magnesium Chloride, etc.) from entering the Key Lock Assembly which could hinder the locking mechanism's performance.

B. Key Lock Assembly (WS03)

The Key Lock Assembly is a barrel lock system constructed of stainless steel. The two retaining pins and plate consist of 7075 T6 Aluminum. Key Lock Assemblies come in 12 varying lock combinations to ensure varied and reliable security. This system is engineered to prevent the tampering and theft of your ball mount system.

C. Hitch Locking Pin (WS05)

The Hitch Locking Pin is constructed of solid stainless steel and includes a barrel lock which can consist of one of twelve varying combinations. The locking pin can be utilized with 2", 2.5", and 3" receivers. The purpose of the Hitch Locking Pin is to protect your property no matter where you travel.

What Real Customers are Saying...

“ Great product. This hitch was exactly what I needed. We do a lot of off-roading, and I bring different machines depending on what type of trip we are taking. Being able to dial in my tongue weight when I run different set ups on my trailer is worth its weight in gold. It is HEAVY DUTY, quality is top notch, and it looks great. Everyone notices it, and asks about it. ”

Wayne R. - eTrailer.com

“ This is a high quality hitch with built in scale. No more guessing if you are properly loaded. The ball height is easily adjustable for different trailers. ”

David Hansen - Amazon.com

“ FANTASTIC!! I bought this to use with my 24" enclosed car trailer. It does just what it says it will do. Excellent fit and finish on the entire unit. ”

William Billings - Amazon.com

“ ...Easy to install, very easy to adjust the ball height. The Scale makes loading a heavy duty trailer to max. capacity a "breeze" (only have to load it once - no reloading required) and driving a heavy trailer with the correct tongue weight makes the road trip so much more enjoyable & safe. ”

Verner H. - eTrailer.com

“ I switch between a 28' cargo trailer and towing my boat and the Weigh-Safe ball mount came with both size hitch balls that I need, plus the added benefit of measuring the tongue weight. I was very impressed...with the Weigh-Safe product. The machine work on the ball mount is perfect and the weigh scale is great for someone like myself who switches between different types of trailers, knowing the tongue weight is correct. This is an extremely well made unit and I highly recommend it. ”

Rob C. - eTrailer.com

“ One-of-a-kind. Well designed product. Durable aluminum finish. Works great on my 2016 RAM 2500 4x4 with a 2.5" receiver shaft. Truck sits up fairly high with factory setup...about 24" from ground to center of receiver. The shaft fits smoothly into the 2.5" factory Mopar receiver...not too loose, yet not overly tight. The 6" drop model allows me to pull the most common cargo trailers and my RV... ”

JP - Amazon.com

“ I couldn't be happier with the hitch... Used the hitch to pull my 27 foot Boston Whaler weighing near 12-13k fully loaded and this hitch was nothing but terrific. Fit perfectly in my 2.5 Reciever, lock was strong and overall fit was perfect with both balls and sliding mechanism... ”

Ross W. - AutoAnything.com

PART NUMBERS

Weigh Safe	WS4-2 WS4-2.5 WS6-2 WS6-2.5 WS6-3 WS8-2 WS8-2.5 WS8-3 WS10-2 WS10-2.5 WS10-3 WSB-L WSB-XL WSB-XXL10 WSB-XXL14.5 WSB-XXL21	Weigh Safe 4" Drop Hitch w/ 2" Shank (8K/10K GTWR) Weigh Safe 4" Drop Hitch w/ 2.5" Shank (8K/14.5K GTWR) Weigh Safe 6" Drop Hitch w/ 2" Shank (8K/10K GTWR) Weigh Safe 6" Drop Hitch w/ 2.5" Shank (8K/14.5K GTWR) Weigh Safe 6" Drop Hitch w/ 3" Shank (8K/21K GTWR) Weigh Safe 8" Drop Hitch w/ 2" Shank (8K/10K GTWR) Weigh Safe 8" Drop Hitch w/ 2.5" Shank (8K/14.5K GTWR) Weigh Safe 8" Drop Hitch w/ 3" Shank (8K/21K GTWR) Weigh Safe 10" Drop Hitch w/ 2" Shank (8K/10K GTWR) Weigh Safe 10" Drop Hitch w/ 2.5" Shank (8K/14.5K GTWR) Weigh Safe 10" Drop Hitch w/ 3" Shank (8K/21K GTWR) Weigh Safe 1-7/8" Hitch Ball (7.5K GTWR) Weigh Safe 2" Hitch Ball (8K GTWR) Weigh Safe 2-5/16" Hitch Ball (10K GTWR) Weigh Safe 2-5/16" Hitch Ball (14.5K GTWR) Weigh Safe 2-5/16" Hitch Ball (21K GTWR)
180 Hitch	LTB4-2 LTB4-2.5 LTB6-2 LTB6-2.5 LTB6-3 LTB8-2 LTB8-2.5 LTB8-3 LTB10-2 LTB10-2.5 LTB10-3	Turnover Ball 4" Drop Hitch w/ 2" Shank (8K/10K GTWR) Turnover Ball 4" Drop Hitch w/ 2.5" Shank (8K/14.5K GTWR) Turnover Ball 6" Drop Hitch w/ 2" Shank (8K/10K GTWR) Turnover Ball 6" Drop Hitch w/ 2.5" Shank (8K/14.5K GTWR) Turnover Ball 6" Drop Hitch w/ 3" Shank (8K/21K GTWR) Turnover Ball 8" Drop Hitch w/ 2" Shank (8K/10K GTWR) Turnover Ball 8" Drop Hitch w/ 2.5" Shank (8K/14.5K GTWR) Turnover Ball 8" Drop Hitch w/ 3" Shank (8K/21K GTWR) Turnover Ball 10" Drop Hitch w/ 2" Shank (8K/10K GTWR) Turnover Ball 10" Drop Hitch w/ 2.5" Shank (8K/14.5K GTWR) Turnover Ball 10" Drop Hitch w/ 3" Shank (8K/21K GTWR)
Universal Tow Ball	WSUN-1 WSUN-2 WSUN-3	2" Universal Hitch Ball w/ 2-5/16" Clam Shell (1" ball hole & 3/4" Platform) 2" Universal Tow Ball (Clam shell sold separately) 2-5/16" Universal Tow Ball (No clam shell)
Weigh Safe Hardware	WS01 WS01.5 WS02 WS03 WS04 WS05 WS06 WS07 WS08	Slider Rack Only for 2" Shank (1500 lb scale) Slider Rack Only for 2.5" and 3" shanks (2200lb scale) Slider Rack with Key Assembly Lock Plate (dual pins) Lock Plate Key Assembly (dual pins) Hitch Ball Pin Hitch Locking Pin- For all 2" or 2.5" receivers (3-1/2"x5/8") Lock Plate Key Assembly (dual pin)-Hitch Locking Pin Combo Universal 2-5/16" clamshell converter Dust Lock Cover
180 Hitch Hardware	TB01 TB02 TB03 TB04 TB05 TB06 TB07 TB08	Turnover Ball Slider Rack Turnover Ball 2"x2-5/16" Combo Ball (8K/14.5K GTWR) Turnover Ball 1-7/8"x2" Combo Ball (7.5K/8K GTWR) Turnover Ball Hitch Ball Pin Slider Lock Pin Combo w/ Pins Slider Rack with Key Assembly Combo Turnover Ball 2"x2-5/16" Combo Ball (8K/10K GTWR) Turnover Ball 2"x2-5/16" Combo Ball (8K/21K GTWR)z

Weigh Safe, LLC.

420 North Geneva Road
Lindon, Utah 84042
855.492.6444

sales@weigh-safe.com

support@weigh-safe.com



www.weigh-safe.com